



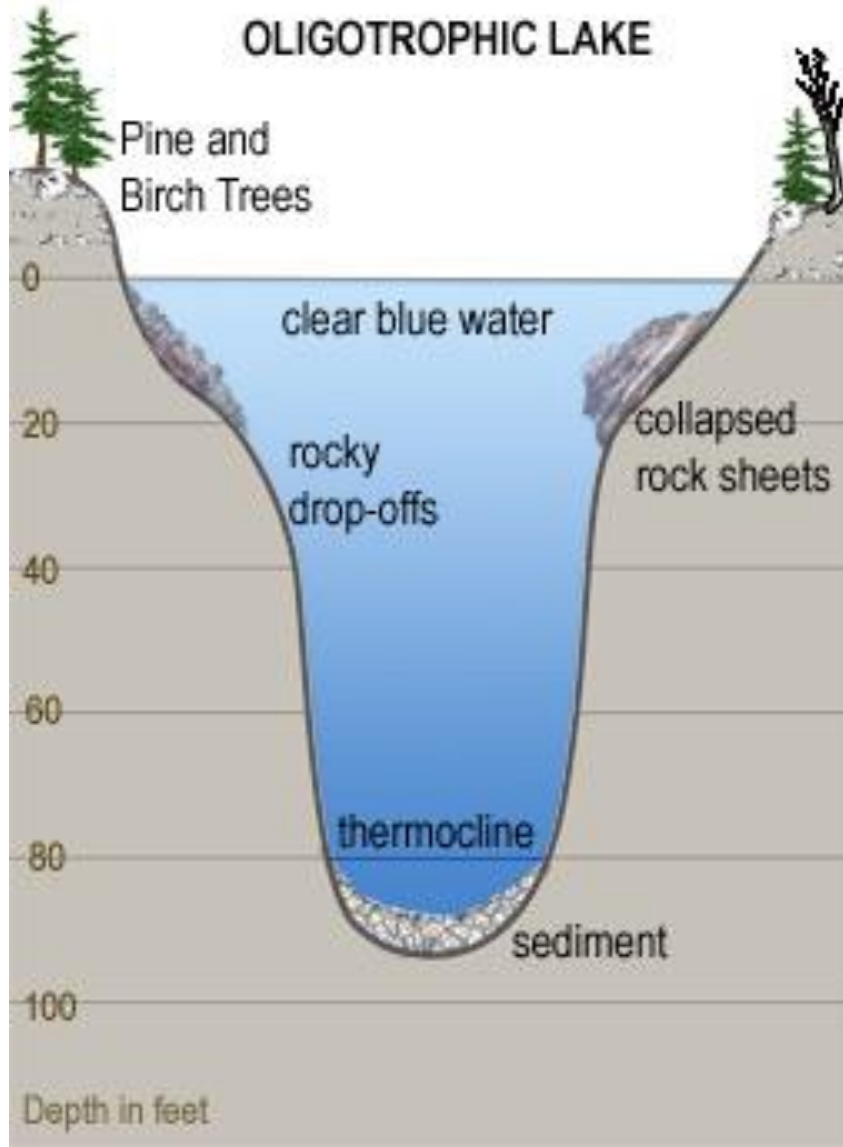
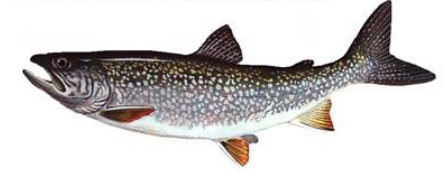
LAKE AGING

THE EFFECTS OF NUTRIENT ACCUMULATION



Oligotrophic

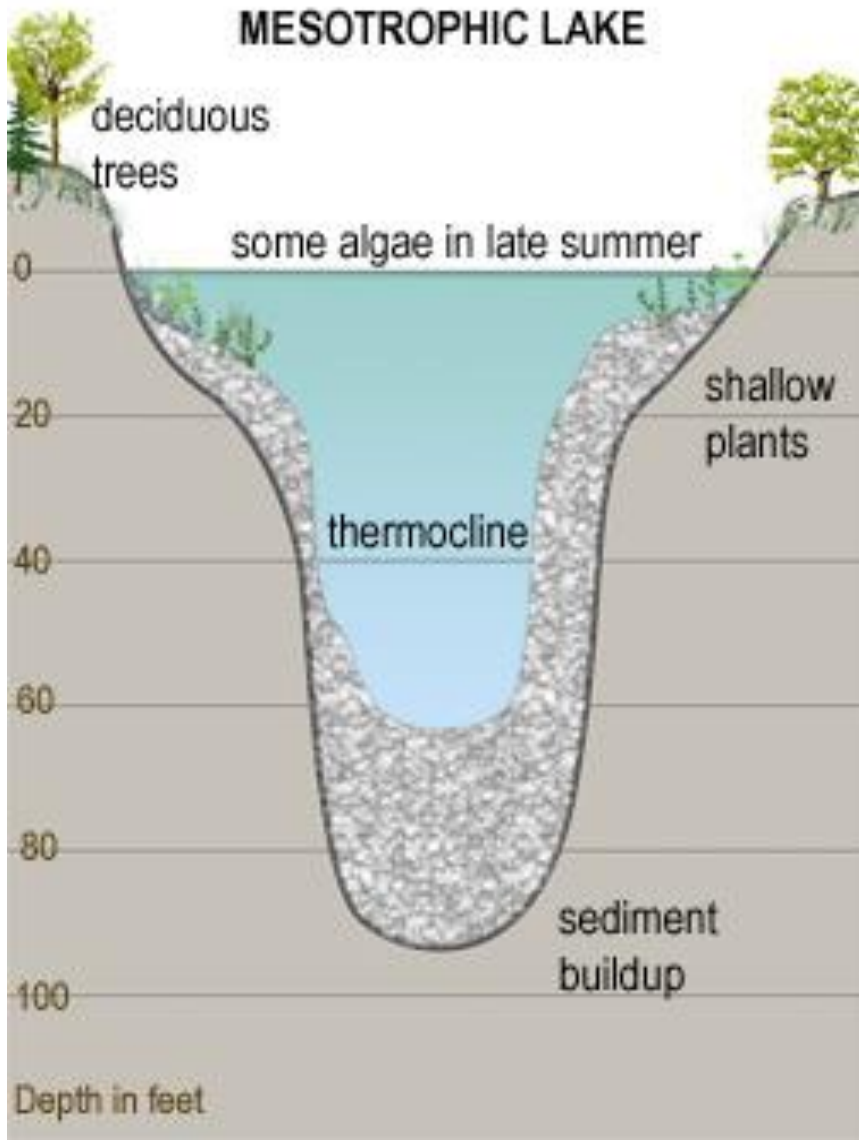
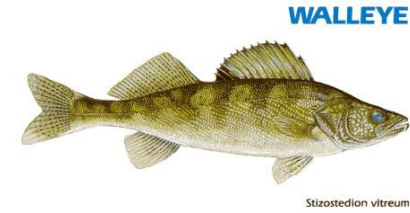
Lake Trout (*Salvelinus namaycush*)



- Clear water, rocky and sandy bottoms, and very few aquatic plants or algae.



Mesotrophic



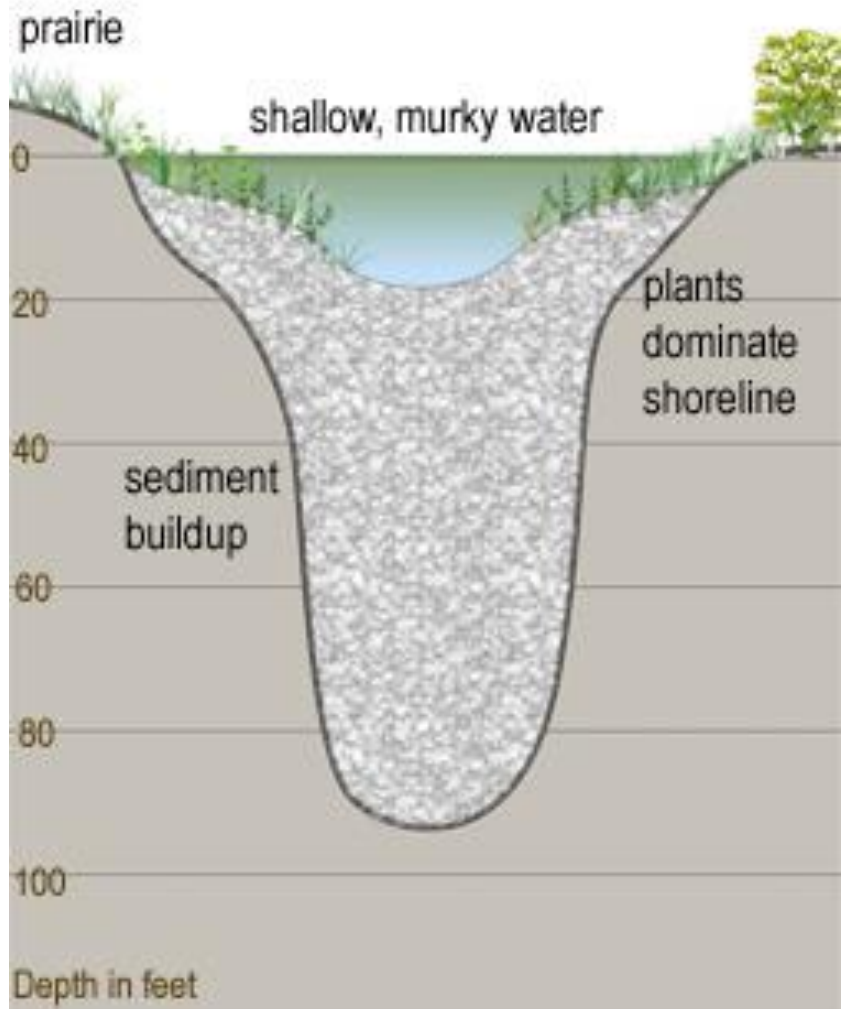
- Sandy sediments with some plants and algae.



Eutrophic Lakes

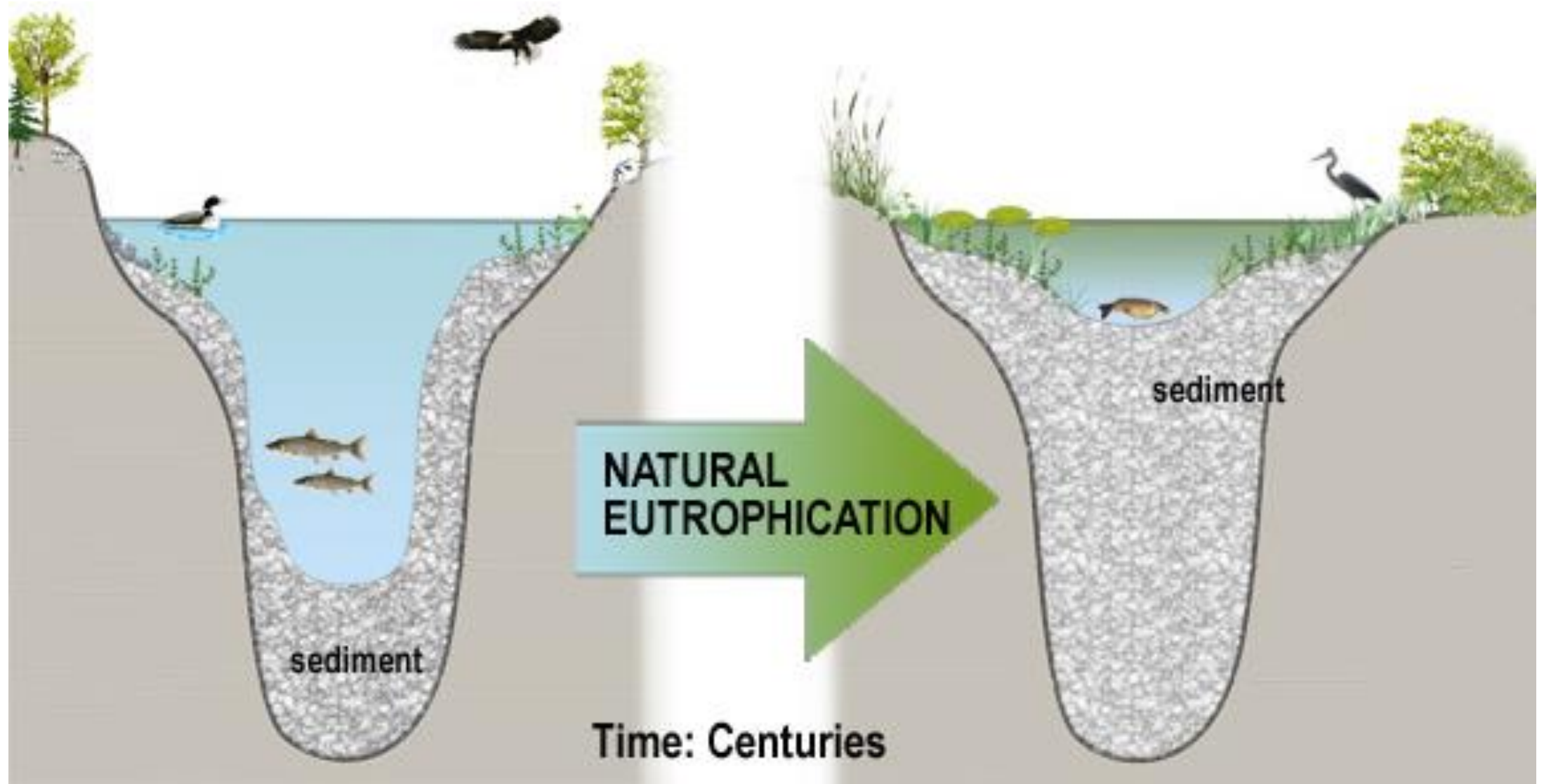


EUTROPHIC LAKE



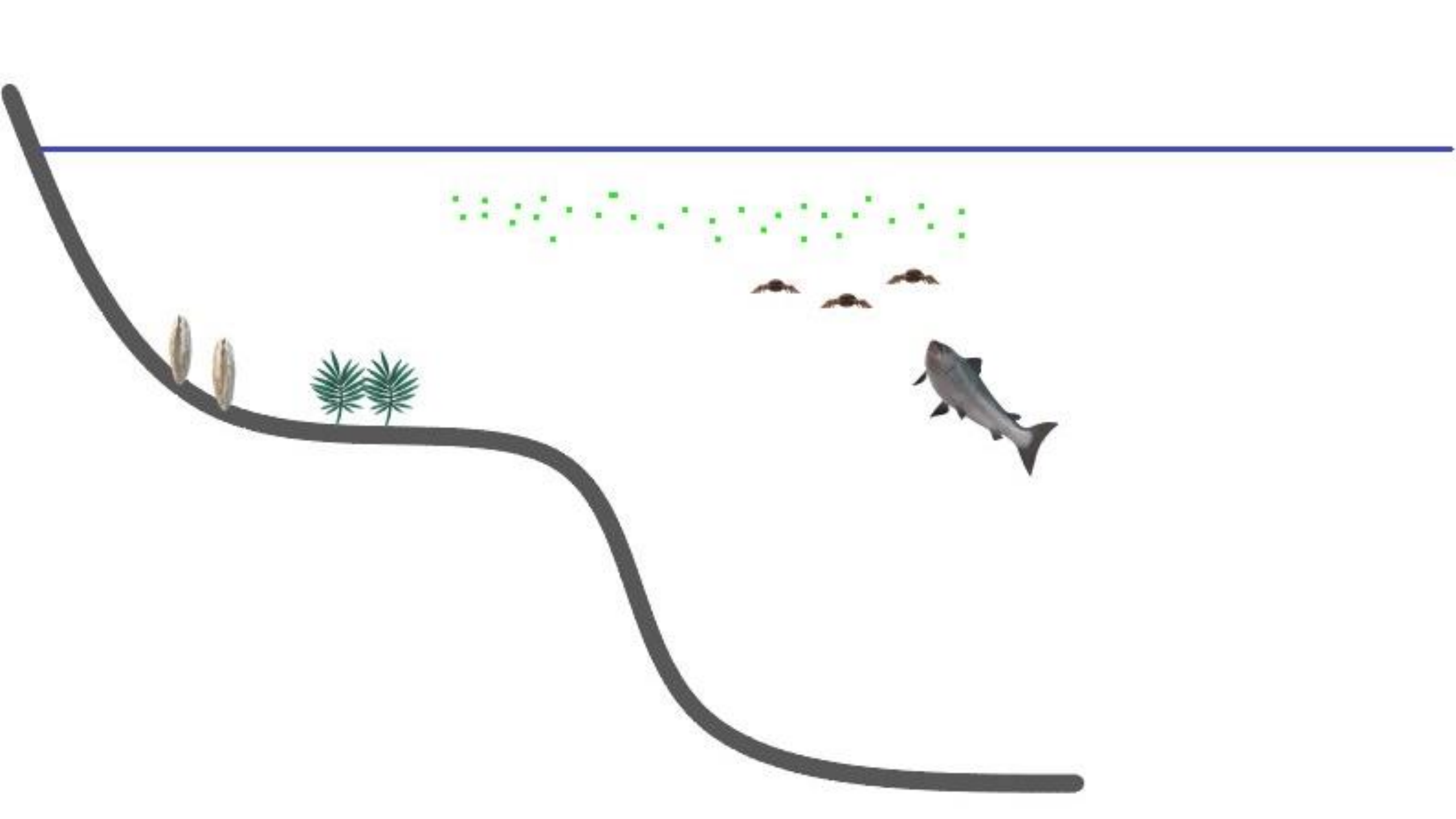
- Sand to muck bottom with abundant aquatic plants and some algae.

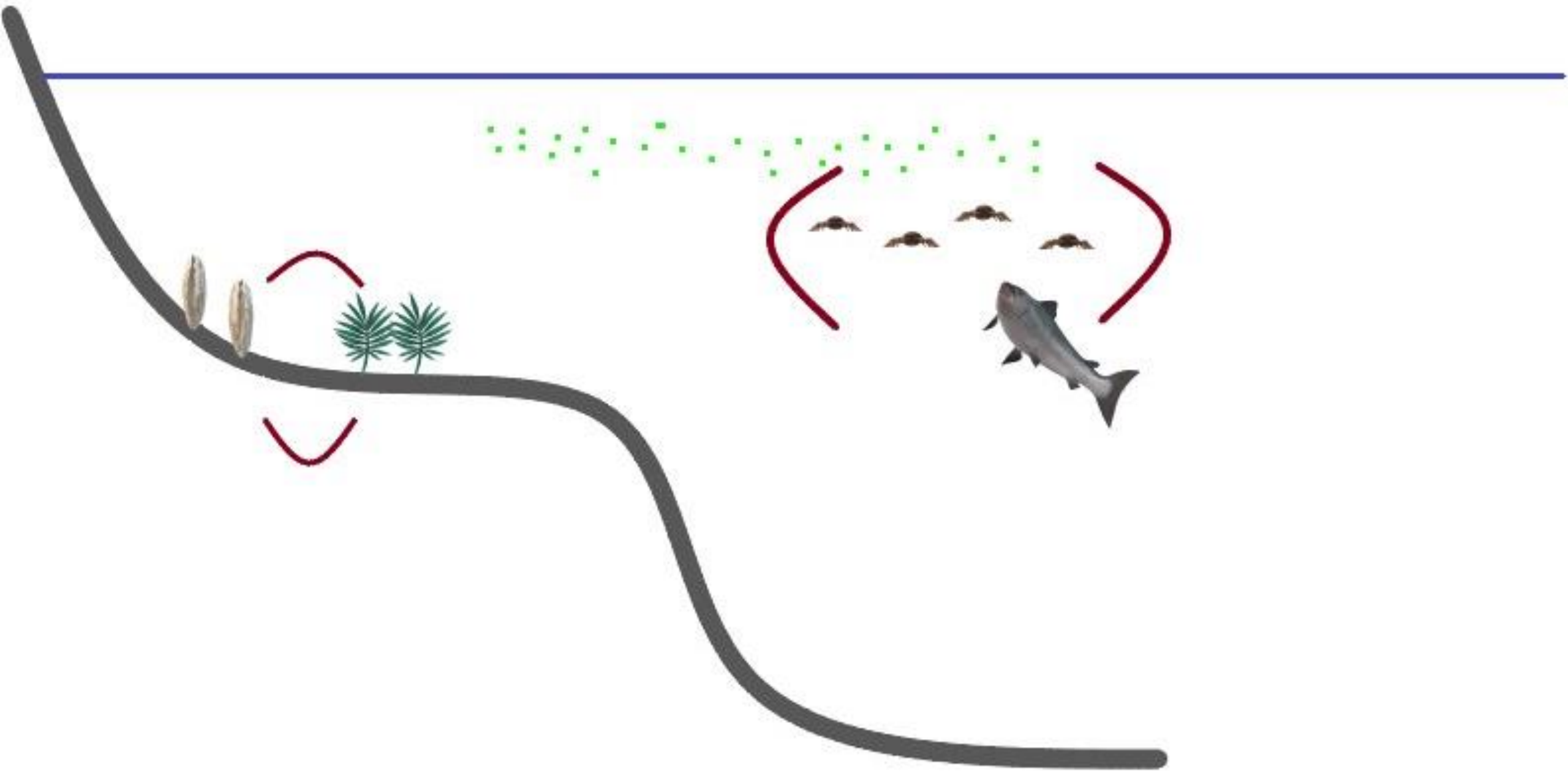
EUTROPHICATION

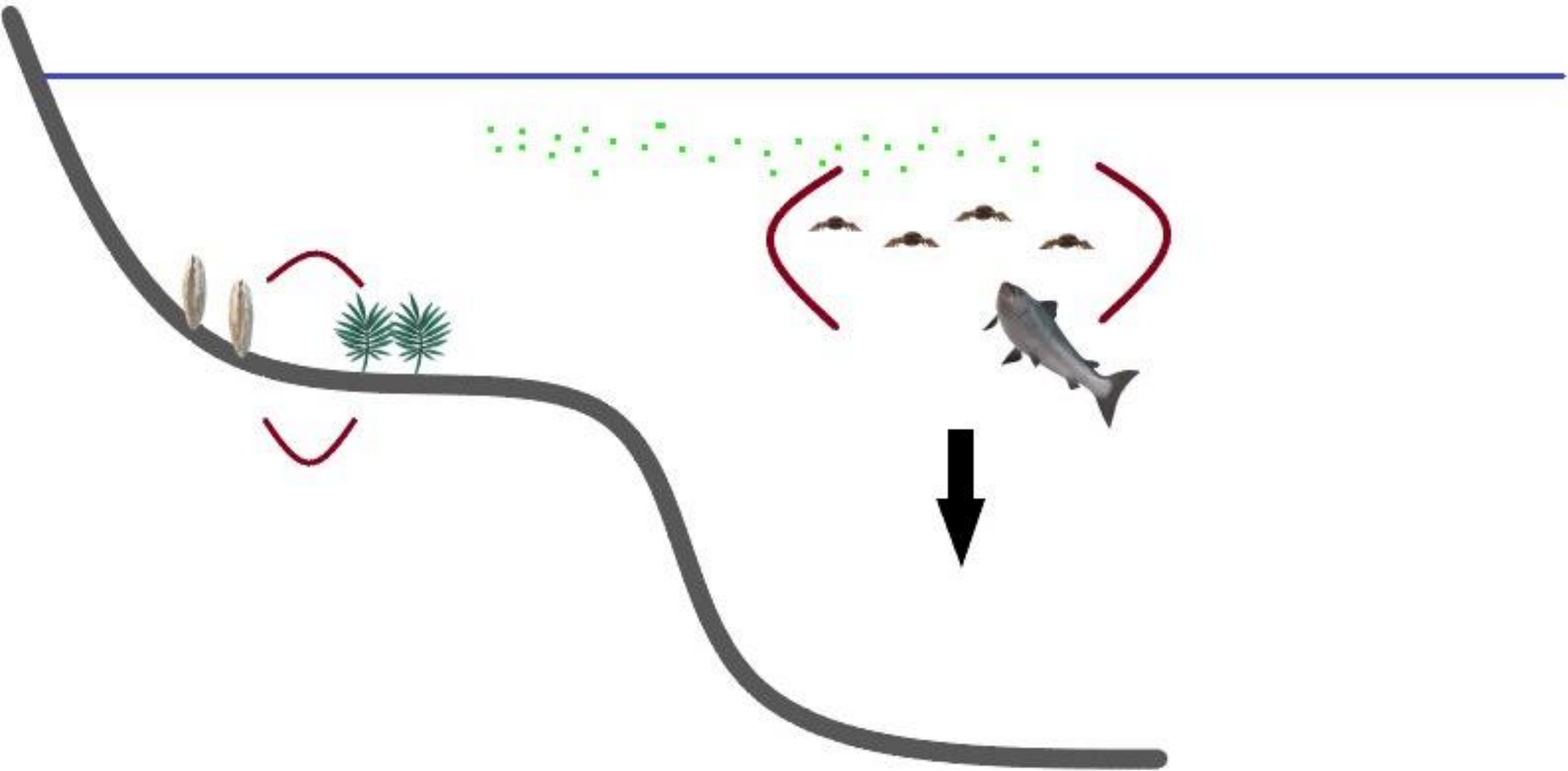


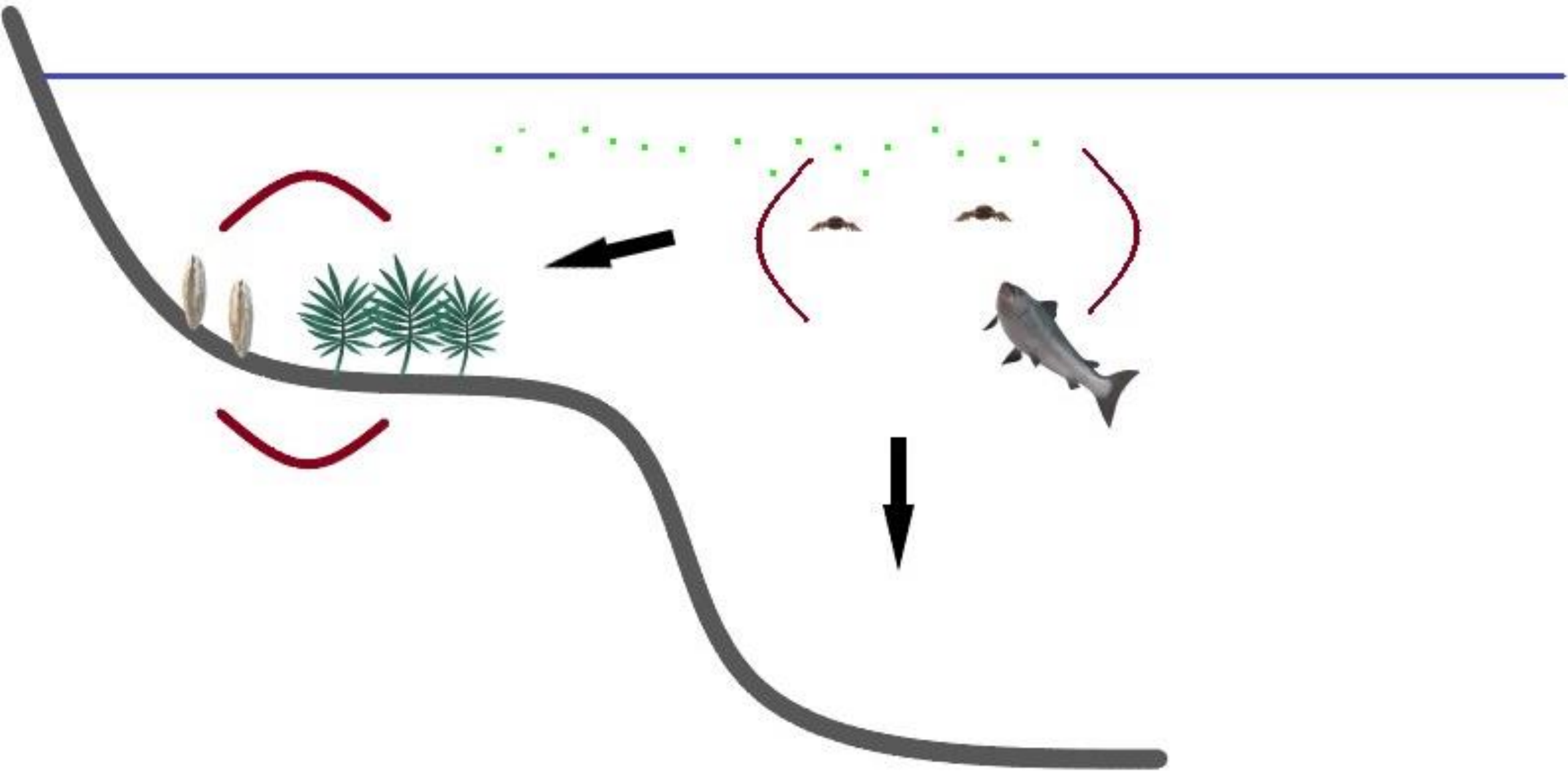
EUTROPHICATION











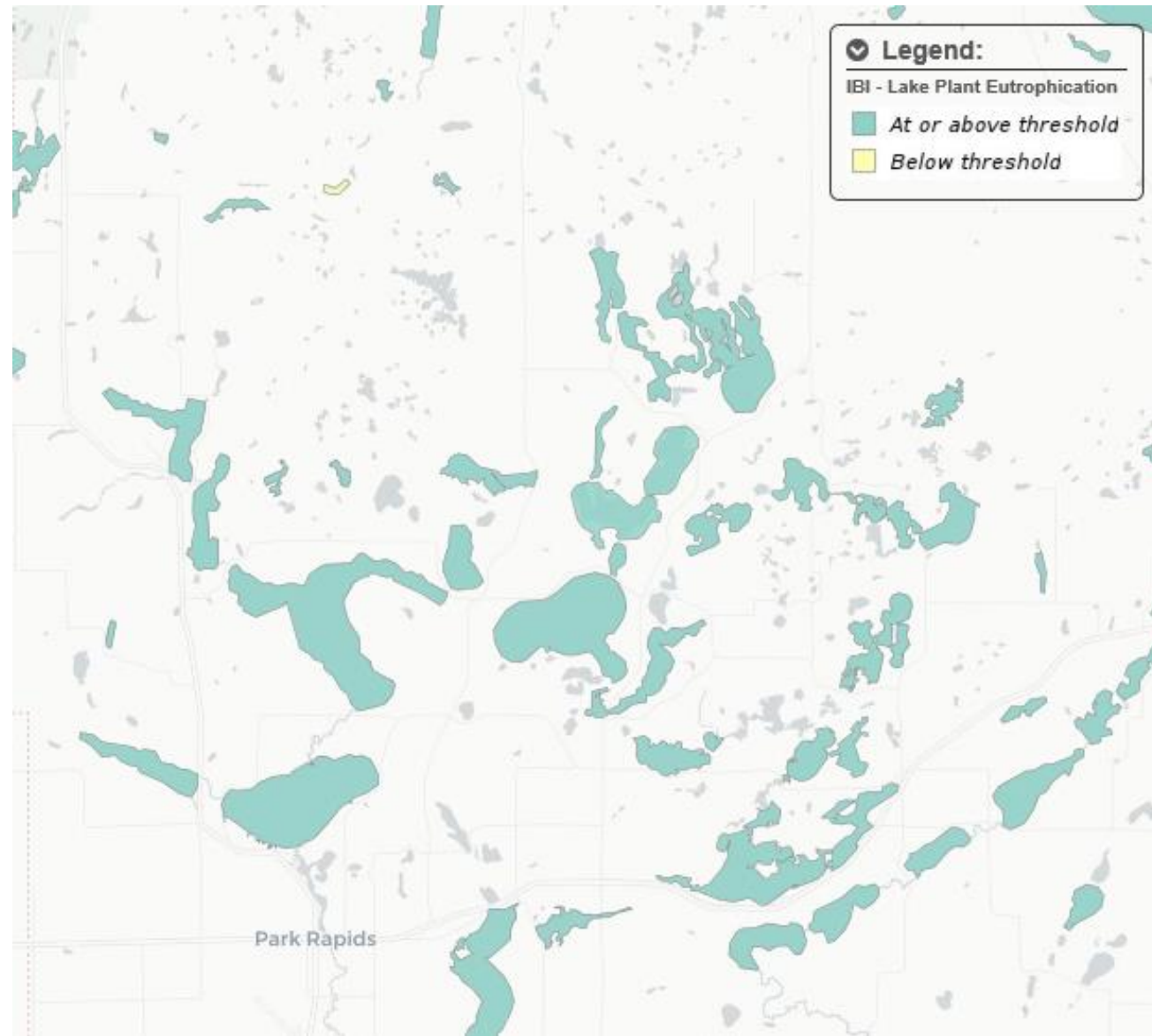




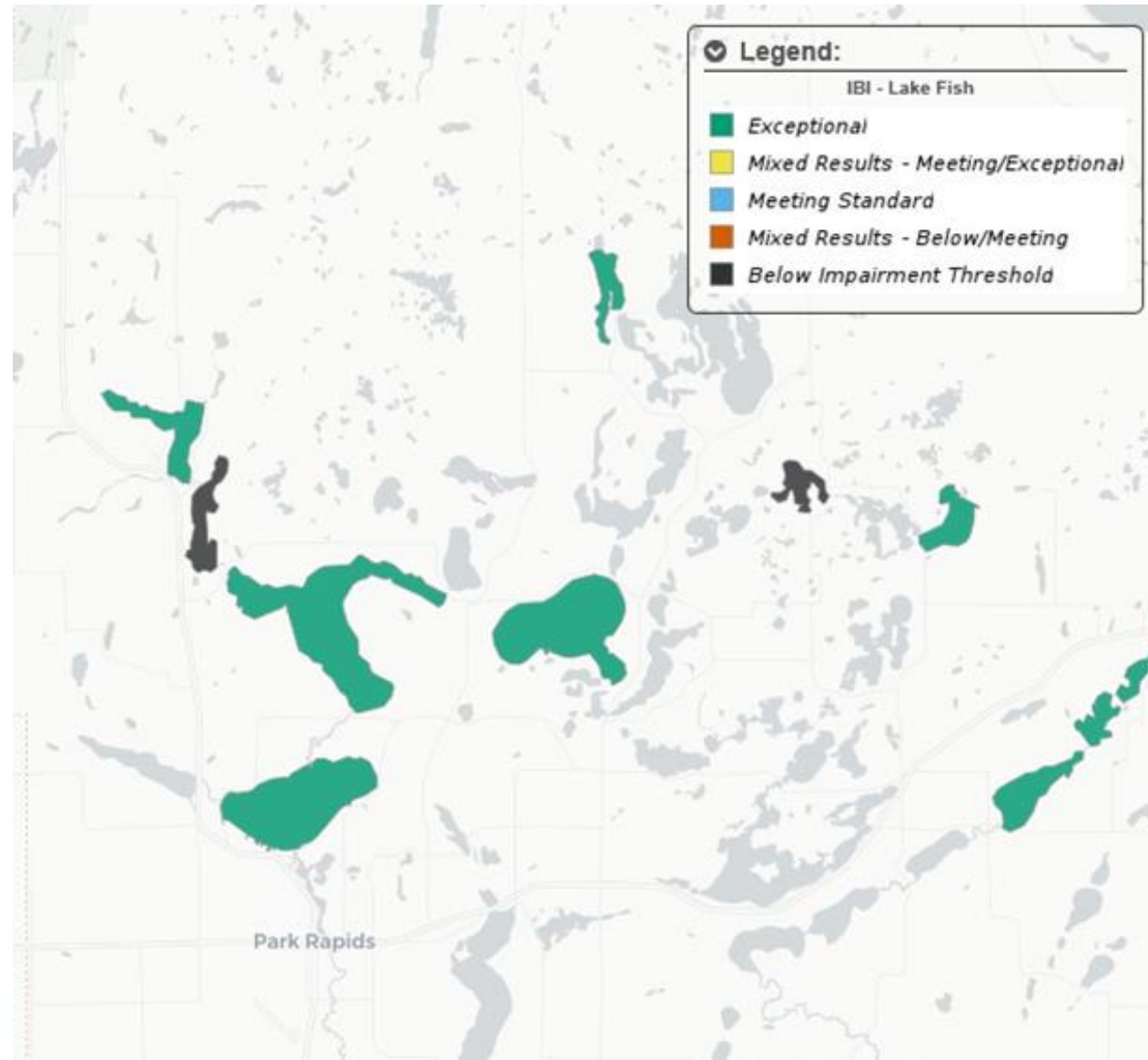
EUTROPHICATION



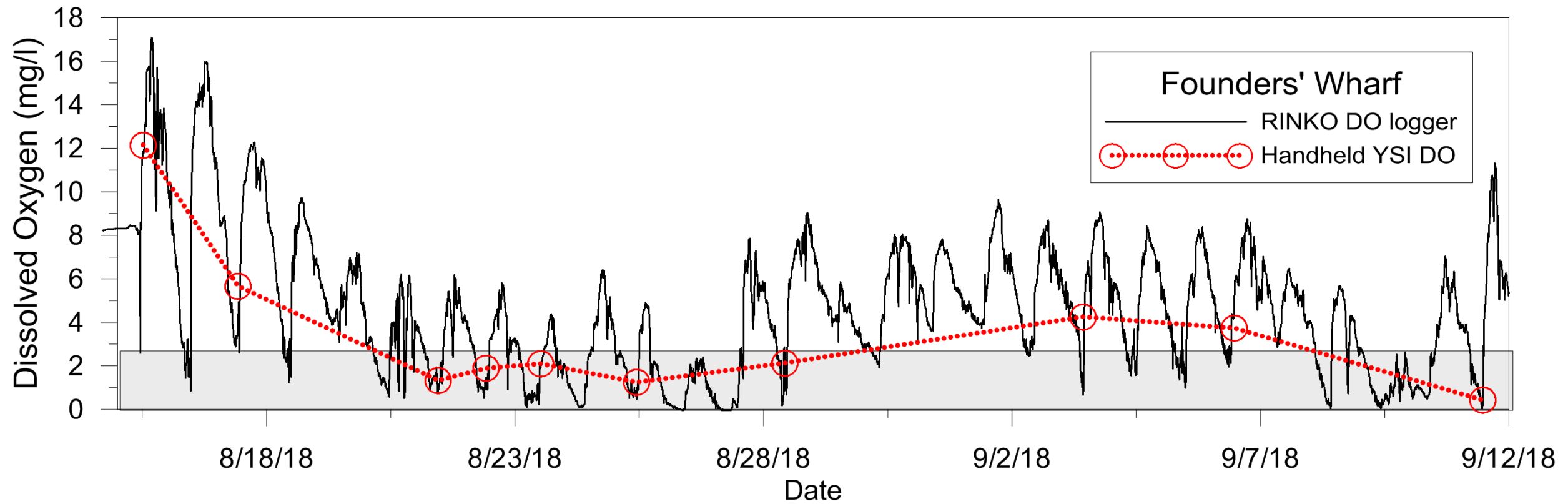
PLANT INDEX



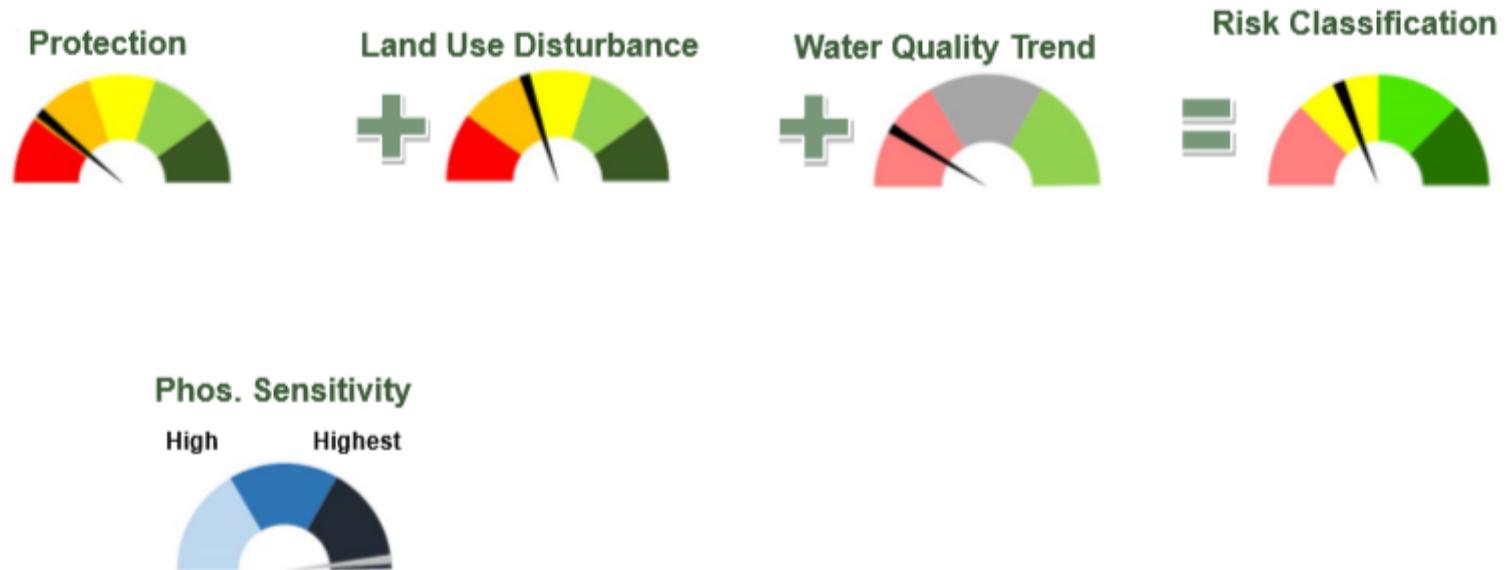
FISH INDEX



BIOVOLUME



WATERSHED INDEX

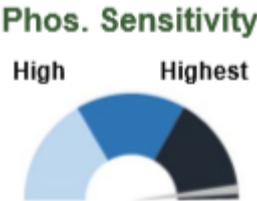


WATERSHED INDEX

53% or
8160 acres



91lb goal



QUESTIONS AND COMMENTS

THANK YOU FOR ALL YOUR EFFORTS.

RMB ENVIRONMENTAL LABORATORIES

STEVE.HENRY@RMBEL.INFO