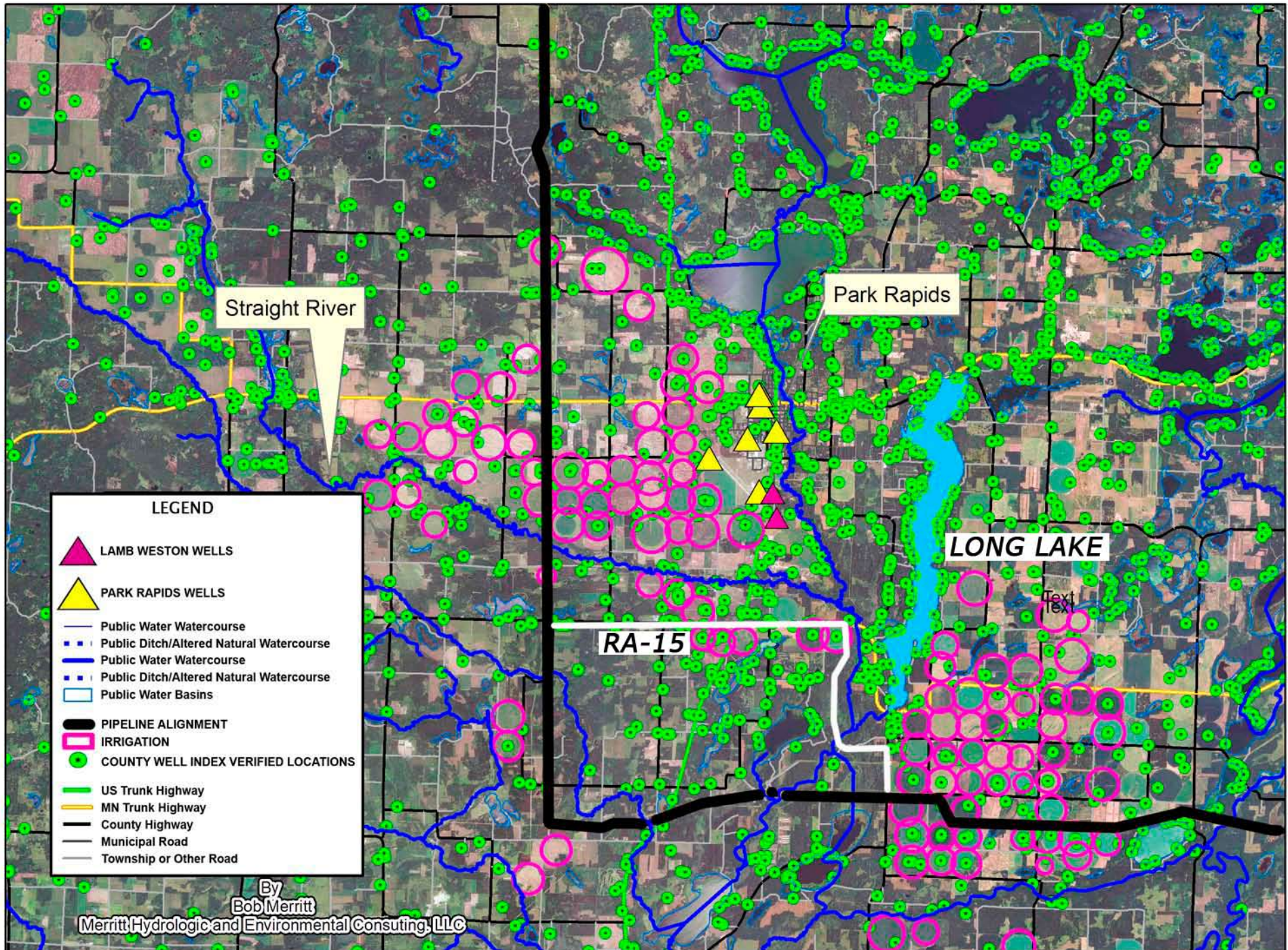


**SANDPIPER PROPOSED PIPELINE ROUTE**  
**Through the STRAIGHT RIVER AQUIFER, HUBBARD PLAINS and LONG LAKE AREA**  
**GROUND WATER FLOW IS NORTHWEST TO SOUTHEAST THROUGH AQUIFER**



**LEGEND**

- LAMB WESTON WELLS
- PARK RAPIDS WELLS
- Public Water Watercourse
- Public Ditch/Altered Natural Watercourse
- Public Water Watercourse
- Public Ditch/Altered Natural Watercourse
- Public Water Basins
- PIPELINE ALIGNMENT
- IRRIGATION
- COUNTY WELL INDEX VERIFIED LOCATIONS
- US Trunk Highway
- MN Trunk Highway
- County Highway
- Municipal Road
- Township or Other Road

By  
**Bob Merritt**  
 Merritt Hydrologic and Environmental Consulting, LLC

