



The COLA Update

Hubbard County Coalition of Lake Associations PO Box 746 Park Rapids MN 56470

Spring Issue 2000

Feedlots in Hubbard county

by Frank Smith



There are many feedlots in Hubbard County at this time although they are all quite small. However, the subject of feedlots is still a big issue because things could all change. Some company could start a big "factory" feedlot with thousands of animals here such as those that exist in southern Minnesota, Iowa and other states. In some of these areas, feedlots and the problems they cause are the main issue of contention.

With modern technology, factory type feedlots can exist almost anywhere if there is sufficient space, water and transportation. Right now, the only limits that exist for feedlot operators is in the state regulations administered by the Minnesota Pollution Control Administration (MPCA). Legislation passed this last session, loosened up these regulations after stringent regulations proposed by the MPCA were largely shot down by feedlot operators during public hearings held early in the year 2000. The MPCA is currently rewriting the rules to reflect the new legislation.

Here in Hubbard County, we do not have any type of feedlot regulation that is controlled locally. Last year, the Hubbard County Planning Commission started some preliminary hearings on the subject of feedlots but this effort was shelved after it became clear that the legislature was going to address the matter in the 2000 session. Now that this legislation is completed, hopefully, the Planning Commission will take up the matter again.

Hubbard County Fish Survey by the DNR

by Paul Child

"... fishing [is] not a sport, not solely a means of subsistence, but a sort of solemn sacrament and withdrawal from the world..." Henry David Thoreau

Many of you are aware that during the summer months the DNR conducts fish surveys of various county lakes, spending about a week on each lake. The surveys are part of a statewide program, and according to Doug Kingsley, the local DNR fisheries chief, a new system was introduced in 1994 to tabulate the data in a manner to integrate it into a common state data bank. Roger Mead and Duane Goeden do the actual collection of fish samples.

The surveys are conducted from June through August and the goal is to conduct a survey on each lake every five years. Nets are used, and to provide more accurate comparative data the samples are collected at the same time of the summer and in the same places from survey to survey. Recently a new method has been introduced – it is the electrofishing technique. It is used at night during the spring, primarily for bass, and in the fall for young of the year walleyes. The fish are stunned, come to the surface, and are then measured and weighed and scale samples obtained for aging. This method does not usually harm the fish.

Before setting the nets, an oxygen profile is taken – no oxygen, no fish. So the nets must be set above the oxygen level, the average being 20 feet for our lakes. Two types of nets are used to collect the fish – the gill net and the trap net. Buoys mark the location of each net when set. Gill nets (250 long) are used primarily for walleyes, perch and northern pike, while the trap nets are used for sunfish, crappies, and some northerns. There are at least nine settings of each net during the week survey, each setting left in for 24 hours because most fish movement takes place during the night. The fish caught in the trap nets are normally alive and can be released. Unfortunately, many of those caught in the gill nets do not survive.

What can be learned from these surveys? Besides a cross-section of the populations – species, sizes, and ages – a determination can be made whether the fish are from natural reproduction or from a stocking program. From an

President's Message

The year round residents welcome back snowbirds, cabin owners, travelers and wildlife. Spring signals the beginning of the annual northern migration of many wildlife species. Nature has provided it's own with special sensors that enable them to find their way back to their spring breeding grounds. The joy of watching them return reminds us that new life is around us.

The other part of this welcome is the human aspect. There are signs - traffic on the roadways, back yards and lots are filling up with campers, boats, recreational vehicles of all kinds, fewer parking places downtown, businesses and resorts opening up after their winter slumber - all this and more is coming. With this mass influx of people also comes the probabilities of misuse to the environment. Taking care of our resources is the responsibility of every person who lives or comes to the area. By everyone doing their best to promote proper land and water use, we can help assure that the resources we enjoy will be here in the future.

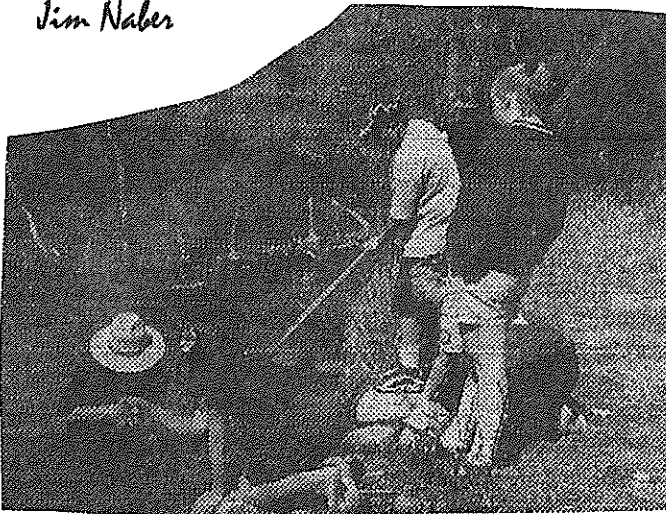
The Hubbard County Shoreland Management Ordinance is in full swing. It would be in everyone's best interest to have a copy available for learning the proper ways to do or have things done to avoid unwanted problems. Copies can be attained at the Environmental Services Office, 2nd floor of the courthouse. They also have a one page summary folder called "Understanding your Shoreland Ordinance" which is free of charge.

For lake associations, the coming of spring means get togethers in which stories will be shared of the past year and plans will be made for the up coming one. Remember to include new people from your area. Let them know your lake association and COLA is working to keep the environment clean and healthy. Invite a group from a neighboring lake that may be interested in starting a lake association. The more the message gets out - the more people will get involved.

Wishing you the best for the up coming season. Remember, everyone is welcome to attend the COLA meetings - see you there.

Every Lake Association needs volunteers. When you are involved your beliefs can be shared, at the local and state levels. Together we can be heard. Get involved in the your Lake Association and COLA.

Jim Naber



Tim James of the MPCA shows 6th graders all about aquatic insects

Freshwater Festival 2000

by Joan Smith

The Freshwater Festival 2000 was held on May 4th at Camp Wilderness on Bad Ax lake. The day was perfect, the weather couldn't have been lovelier, the 328 students, 14 instructors, 62 COLA volunteers and one County Commissioner, Swede Nelson, all participated eagerly in the activities. It was a day of learning about new and exciting environmental issues, solutions, causes etc. in an enjoyable and informal way.

The event is sponsored each year by the Hubbard County Water Task force, the Soil and Water Conservation District (SWCD) and COLA.

E911 Update

by John Weber

A major milestone in the E811 project to readdress rural Hubbard County was achieved on Feb. 7th. That's the date when the bright yellow sheets with new addresses were mailed out. By now, if you live on a road, public or private, with three or more homes or businesses along it, you should have received your new 5-digit house number with street name or number following it. If you haven't, contact E-911 coordinator Bill Alden, SWCD at 732-5528 or toll-free at 1-877-590-8040.

You should also contact Alden if something doesn't seem right with the address you've been assigned. Compare it with the neighbors for example. However, he hastens to add: "There are 1000 address numbers reserved per linear mile. That equates to one pair for each 10.5 feet so there could be a big gap between the house number for you and your next-door neighbor.

At this time, bare lots are not being given addresses. However, if someone is developing a lot this year, start the process at the Hubbard County Environmental services Offices in the Courthouse at Park Rapids. That office will review the setbacks for planned buildings, septic sites, well placement as well as get you into the E-911 addressing process.

If you have received your new address, you should be advising correspondents of your change. Right now, post offices serving Hubbard County will sort and deliver your mail by both old and new addresses. However, by February 2001 generally only new addresses will be used.

continued on page 4

Lake Association News

5th/6th Crow Wing Lake Association -

Ted Spencer

It has been the usual busy year - our 11th! Starting with our annual boat parade on July 4th (too windy!) but what a great picnic. Our Cola Water Testing in the summer & then in August the Annual Pot Luck & Horseshoe Tournament and a hot dog roast in September. We shared in sending two Nevis School kids to Deep Portage Aqua Camp (a great program)- Cleaned up our stretch of Highway 34. We 'bud capped' at Itasca State Park to help save trees -In December we again 'Rang the Bell' for the Salvation Army and collected just over a \$1,000. In February, a winter ice fishing contest - guess what? no fish were caught! -but fun and door prizes. In April two new loon nesting rafts were put out. In May a 'welcome Back Dinner' for our snowbirds will be held. 7th Crow Wing Lake has indicated interest in joining our association. They have about 14 cabins or homes on their lake to our 100 or so property owners. Bringing septic up to code has been on the front burner with several people complying this past year but too many to left as 'nonconforming'. Our almost monthly newsletter continued and helped 'glue' us together and be informed. Our annual meeting in June will produce a new president with the retirement of Chuck Anderson (two terms) and will produce several new board members.

Belle Taine Lake Association

Jim Canada & Melva Lamp

At the time of this writing (March 28) our Snowbird neighbors are migrating northward from wherever they go whenever it gets cold. Maybe it is just a coincidence but Belle Taine chipmunks are also appearing. And then in several weeks we'll be having 'ice-out', the loons will have their fly-in, and Ursus Americanus will roll out of his nest ...hungry as a bear!.

Our water level remains high. Sure wish we could be of assistance to our drought stricken farmer friends. We'll gladly share some of our liquid with them, or with anyone else who will take it.

Belle Taine's Spring Dinner is scheduled for May 17. Highway trash pickup will be May 20th.

Since last summer the Ladies of Belle Taine have been meeting monthly for lunch at a local restaurant.

Bob Groth and Birdie Thompson got the idea and organized the group which has met throughout the winter. It has been a great way to meet new people and keep in touch with old friends. With summer fast approaching, we look forward to seeing the snowbirds return and getting to know all the newcomers in the area. Everyone is welcome - watch for the notices in the Northwoods Press and Park Rapids Enterprise.

Spider lake Association *by Don Marg*

- 1) We have participated in the Cola water testing program for the 4th year.
- 2) With two nearby lake associations, we have joined to send two Nevis students to Deep Portage Aqua Camp (one week long) this summer.
- 3) We contributed \$50 to the Children's Water Festival and have a number of volunteers to assist it.
- 4) We participate in a 'Loon Watch' program and put out 3 loon platforms on April 10th.
- 5) Our annual meeting is June 10th and our speaker is Pam Perry of Brainerd DNR
- 6) Our membership year is 6-1 to 5-31 and we currently have 91 members.

Palmer Lake Association

by Bud Schlöng

Our Association continues to have a very active membership. Our annual meeting will be held again this year on Memorial Day at the Hubbard Methodist Church. We look forward to welcoming several new lake residents to the meeting this year. The date is not yet finalized, but all residents will be invited to a picnic in July. We will again be checking boats for milfoil at the public access on major weekends. -

Long Lake News -

Milt Wisland

Spring is almost here after a "Stop and Go" spring. One day we were driving through a snowstorm just south of the Twin Cities. After passing five cars in the ditch we turned on the radio and they reported 70 degrees and sunny in Menahga. Home never sounded so good, and I'm sure, many of you are feeling the same as you return from your winter homes. That first look at the lake is always exciting.

As soon as we arrived home, we ran out to see if the ice was out and our bay was clear of ice. This is a big event in our lives on the lake. The next morning, however, I pulled the living room drapes open and the bay in front of our home was completely covered with ice. Apparently the wind had changed from the north and blew floating patches of ice back to cover the whole bay, well as far as I could see. Well as I said earlier it has been a stop and go spring and now I might add, an "In and Out" ice.

The big day for all of the ice to go out was the eight of April. This might not be the earliest in history but one of the earliest some of the "old timers" on the lake can remember. After checking with Evelyn White's records (Dick White's wife) and Peg Paquin's records it appears that April 13th was the earliest covering the period 1985 - 2000. The latest their records showed was May 6th. I wondered if the ice would be out in time for the opener that year.

Island Lake South Association -

by Dennis Dartt

Trees that residents ordered through COLA last autumn can be picked up at Gary Stolzenberg's. The annual spring get-together for residents will be Saturday May 27th, 3pm at the home of Dennis and Joan Dartt. Each family is invited to bring an hors d'oeuvre for sharing. At that time we will discuss the ongoing island lake history project and some ideas for promoting lake stewardship. Residents are reminded of the extremely high fire danger and restrictions on open burning.

Big Sand Lake Area Association

by Cynthia Jones

The association works with DNR to Revise Lake Management Plan. Representatives from the Big Sand Lake Area Association (BSLAA) met with DNR representatives in February to review and revise the DNR Lake Management Plan for Big Sand. The initial plan was developed in 1997 following the implementation of an experimental slot length limit for walleyes taken from the lake in 1995.

Following unanimous consent from lake residents and the public during 1999, the DNR approved the continuation of the experimental limit scheduled to end in May 2000 for an additional five- (5) year period. DNR data to date indicate that there does not appear to be an appreciable change in fish greater than 26 inches in size since implementation of the limit. However, it was felt that the relatively short period of time that the regulation has been in place might not yet have had the opportunity to affect the abundance of large-size fish. The protected limit requires that all walleye in possession while on or fishing on Big Sand Lake must be less than 18 inches or greater than 26 inches in length. All walleye between 18 and 26 inches must be immediately released and a person's possession limit may not include more than one (1) walleye over 26 inches. The restriction does not apply to other species of fish.

The revised plan is due shortly and will serve as a basis for ongoing evaluation of the experimental slot length limit and monitoring of the overall fish population on Big Sand. The information will be made available to all BSLAA members and may be obtained from the DNR Fisheries Office

Lake Gilmore

by Joan Smith

Last August the residents of Lake Gilmore, both permanent and seasonal, voted to form our own Lake Association. Our fiscal year is from August 31 to August 31 of the following year. To date we have 35 members, which may not seem like much to larger Lake Associations, but there are only 46 lots on our lake.

Our Annual meeting is held on the 1st Saturday in August during our Gilly Fest celebration which is an all day affair culminating in an auction by firelight.

Our members feel that yearly water testing is extremely important. Even though Lake Gilmore is one of the cleanest in the region we recognize the fact that we do not have a flow-through and therefore could be vulnerable to change at any time.

Eagle Lake

by Mary Hutter

The association had a winter get-together at the Island Inn on March 31st. The annual meeting will be held at the home of President Larry Dougherty on Saturday June 10th at 3:00 PM. A business meeting will be followed by a potluck dinner.

The Eagle Lake association participates in the COLA lake water-monitoring project. Mike Loeffler takes the readings throughout the summer. The association also helps support the annual Freshwater Festival and other beneficial causes.

E911 Update (continued from page 2)

Alden reminds us that the E-911 system is not completely automated at this time. It won't be until your new address has been merged with your telephone number in a master database. This will take most of the year 2000 to achieve. The task is 65 percent accomplished at this time. If you have a 911 emergency, you need to provide the dispatcher with as much directional information as you can so they can find you. (This includes your old fire number if you've been assigned one)

Street signs should go up sometime this year. August and September look like the earliest. Then your 5-digit house numbers will be installed by your drive. This will be done by a separate contract also slated for this year.

Other points

1. Location of your driveway was used to get a GPS (Global Positioning System) fix. If your driveway ever is relocated, you will probably be assigned a different address. Also the "plus 4" part of your Zip Code most likely will change so don't try to use it at this time.
2. Later this year, a St. Cloud publisher will print new plat books for Hubbard County. It will be printed with two pages facing each other of each township. The first page will be the customary parcel map and the second page will be the new E911 street names and number assigned to roads.

In closing, Bill Alden requesting your continued patience with the process. As of early May, he was still making 150 edits or so per week to address the database handled by the contractor ProWest.

Feedlots (continued from page 1)

We can hope that our county will never get a large factory feedlot, but it is still possible. Should such an event ever occur, we certainly would be better off with a strong feedlot ordinance in place. Here are some key elements that should be considered for a Hubbard County Feedlot Ordinance:

1. Protect our lakes and streams. The state law as it is now configured, does not require that animals be fenced from lakes or rivers. A Hubbard County ordinance should provide this protection,
2. Protect our watersheds. Runoff into streams or lakes should be controlled to prevent animal waste from being washed into them
3. Regulate odor. The state law has very little protection regarding odor control and in fact, provides a three-week moratorium on odor control when tanks and ponds are being cleaned. In our county, we need something better than that covered by state law.
4. Regulate manure application methods. The state law is weak in this area and does not allow for sufficient training nor does it control application methods. In Hubbard County, we should have control of this to provide protection from groundwater contamination.

It is true that little can be done to prevent the establishment of a factory type feed lot in our county. However, we can take action in advance of such an event with a strong feedlot ordinance. Perhaps if it is strong enough, the factory feedlot will never come.

Fish Surveys by the DNR (cont. from page 1)

examination of scales and bony structures ages and growth rates can be learned. And growth rates will tell something about the forage base. For instance, although perch are not a prized game fish, they are important to the ecology of a lake as they affect other fish populations, especially the predators. Numbers of fish per net give an index of abundance that can be compared with past samples or with other lakes.

Besides the fish sample, the survey normally includes an oxygen profile, some water chemistry, maps of vegetation and shoreline development. Roger states that in protecting the habitat for healthy fish populations, proper protection of the shoreline is critical. The DNR does have control of aquatic vegetation as permits are required before it can be removed. Such vegetation is important as it provides forage for fish and waterfowl, protects the shoreline from erosion, and removes nutrients, thus purifying the water.

Decisions on stocking can be made from the results of these surveys. But according to Roger, stocking especially northern pike, must be done with caution as the DNR has discovered that fish balance can easily be upset. Natural fluctuations in fish populations are expected, but if there is a significant change, further study is made to determine the causes.

Because the work schedule is heavy during the summer the samples are stored. Then Roger and Duane spend the winter months studying their field notes and examining the data, primarily looking at fish scales and the bony structures. The results are assembled and fed into the state data bank and a report is drawn up for each lake. These reports are available to lake associations and the residents.

The following lakes are scheduled for a survey this coming year:

Lake/River	Acres	Date
Little Mantrap*	348	Spring
Spider*	544	Spring
Spearhead	188	5/30-6/02
Bad Ax	322	6/05-09
Garfield*	979	6/12-16
Crow Wing #10*	173	6/19-23
Ojibway	292	6/26-30
Owl	85	7/3-07
Crystal	197	7/10-14
Island*	544	7/17-21
LaSalle (Lower)	221	7/24-28
Ham	178	7/31-8/04
Schoolcraft	116	8/07-11
Straight*	423	8/14-18
Duck*	326	8/21-25
Blacksmith	37	8/28-9/1
Shipman	56	open date
Little Long	14	open date
Indian	49	open date
Kane	28	open date
Upper Twin	225	open date
Lower Bottle*	652	Fall
Upper Bottle*	465	Fall
Boulder*	360	Fall
Kabekona*	2607	Fall
Potato*	2100	Fall
Big Sand*	1659	Fall
Little Sand*	386	Fall
Shell River	NA	open date
Straight River	NA	8/28-9/8
Kabekona River	NA	8/28-9/8

* scheduled for Electrofish survey Spring and Fall items are only electrofishing

For those interested, Doug can tell you when your lake is next scheduled for a survey and discuss the details of the project with you. Out on the lake, Roger and Duane are always happy to explain their procedures to you.

These fish surveys are another important service that the DNR provides to promote the health of our lakes. Wise management, of course, must begin with accurate data. Healthy fish populations are essential to the well-being of Hubbard County, not only for the enjoyment of our citizens but to attract the many visitors who come during the summer months.

The COLA Update
 Hubbard County Coalitions of Lake Associations
 P.O.Box 746
 Park Rapids MN 56470

Printed on recycled paper

MBTILGEILSKE AS
 Melissa Gilbert

Non Profit
 Organization
 US Postage Paid
 Permit #64
 Park Rapids
 MN
 56470



AUTO
 LEONA NIELSEN
 RR 3 BOX 139A
 PARK RAPIDS MN 56470-9308

<p>Member Lake Associations</p> <table border="1"> <tr> <td>5/6 Crow Wing</td> <td>Big Sand</td> <td>Fish Hook</td> <td>Kabekona</td> <td>Portage</td> </tr> <tr> <td>8th Crow Wing</td> <td>Blue</td> <td>Gillmore</td> <td>Little Sand</td> <td>Potato</td> </tr> <tr> <td>Bad Ax</td> <td>Eagle</td> <td>Ham Lake</td> <td>Long</td> <td>Spider</td> </tr> <tr> <td>Belle Taine</td> <td>East Crooked</td> <td>Hinds</td> <td>Lower Crow Wings</td> <td>Stony</td> </tr> <tr> <td>Big Mantrap</td> <td>Erma/Stocking/Bottle</td> <td>Island (south)</td> <td>Palmer</td> <td></td> </tr> </table>		5/6 Crow Wing	Big Sand	Fish Hook	Kabekona	Portage	8th Crow Wing	Blue	Gillmore	Little Sand	Potato	Bad Ax	Eagle	Ham Lake	Long	Spider	Belle Taine	East Crooked	Hinds	Lower Crow Wings	Stony	Big Mantrap	Erma/Stocking/Bottle	Island (south)	Palmer		<p>Officers</p> <p>President: Jim Naber Vice President: Jerry Lamp Secretary: Judy Novak Treasurer: John Weber</p> <hr/> <p>COLA Update Staff</p> <p>Editor: Frank Smith Production: Ted Spencer Mailing: Rich Rothermel Writers: Paul Child, John and Marlene Weber, Ted Spencer, Frank Smith</p>
5/6 Crow Wing	Big Sand	Fish Hook	Kabekona	Portage																							
8th Crow Wing	Blue	Gillmore	Little Sand	Potato																							
Bad Ax	Eagle	Ham Lake	Long	Spider																							
Belle Taine	East Crooked	Hinds	Lower Crow Wings	Stony																							
Big Mantrap	Erma/Stocking/Bottle	Island (south)	Palmer																								
<p>In this issue:</p> <p>Feed Lots in Hubbard Co. Fish Surveys by the DNR E911 Update Freshwater Festival 2000</p> <p>and</p> <p>Lake Association News!</p>																											